

Acer Negundo 'Kellys Gold'



Magnolia 'Little Gem'



Cordyline australis purpureum



Clivia Miniata



Juniperus virginiana 'Skyrocket'



Agapanthus praecox ssp orientalis



Pittosporum 'Screenmaster'



Agave attenuata  
in pot 500mmH



Lomandra longifolia 'Tanika'



Strelizia reginae



Liriope muscari



Trachelospermum jasminoides



Dianella revoluta

Lasercut powder coated metal screen designed & installed by Bullseye

Scale 1m



Tennis Court Fencing 3m H Powder Coated Woodland Grey to Australian Standard others to supply & install

Pool Pump & Filter Equipment supplied & installed to Aust Standard by Pool Builder

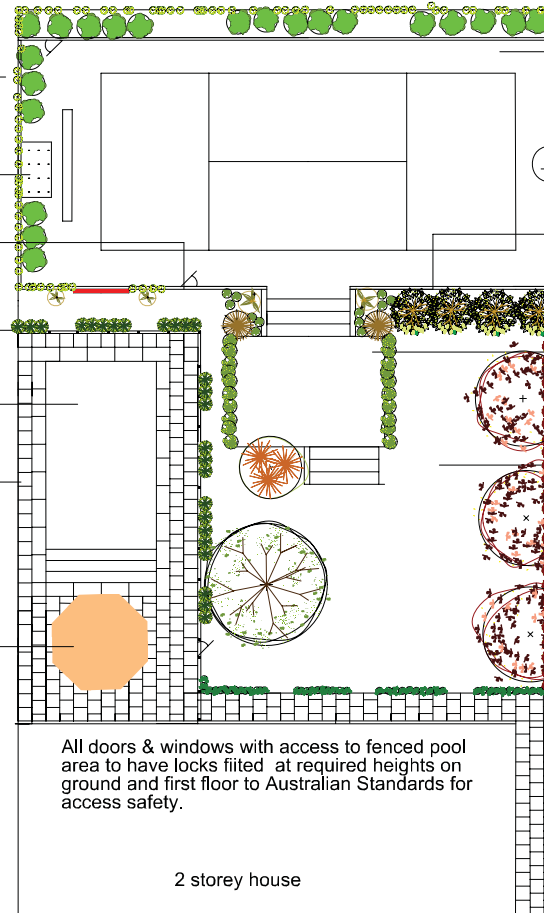
Tennis court fence angled down to 1.2m H at steps

Pool Fencing 1.2mH with 50mm powder coated posts (Woodland grey) /8mm toughened glass + footings supplied & installed by Adelaide Fence Ctr

Concrete Pool installed by others with council permits and to Australian Standards.

Paving 500x500x50 Maison laid on compacted 75mm rubble base set in 30mm washed concrete sand & pointed with paveset at 2 % fall to drains as per best practise. Coping 1000x400x50 Maison on reinforced concrete installed by pool builder Laid at 2% fall away from pool to best practise to drainage system

Shade umbrella on moveable stand



1/2 Court Tennis Synthetic Grass on Stabilised Road Base supplied & installed by others.

Basketball ring & backboards supplied & installed to council regulations by others

Tennis court fence angled down to 1.2m H at steps

Pavillion as per architects drawings, specifications & installation. Raised 600mm from ground level 2800 H w flat roof, ballustrade & corner pillars

Velvetene Lawn Level for a variety of ball games & activities

Boundary Fencing 1.6m H Colourbond Woodland Grey footings and installation by manufacturer

All doors & windows with access to fenced pool area to have locks fitted at required heights on ground and first floor to Australian Standards for access safety.

2 storey house

Design is for Garden Design puposes only. All measurements to be checked on site.

# Active Garden

jo connolly - the edge landscape & garden design